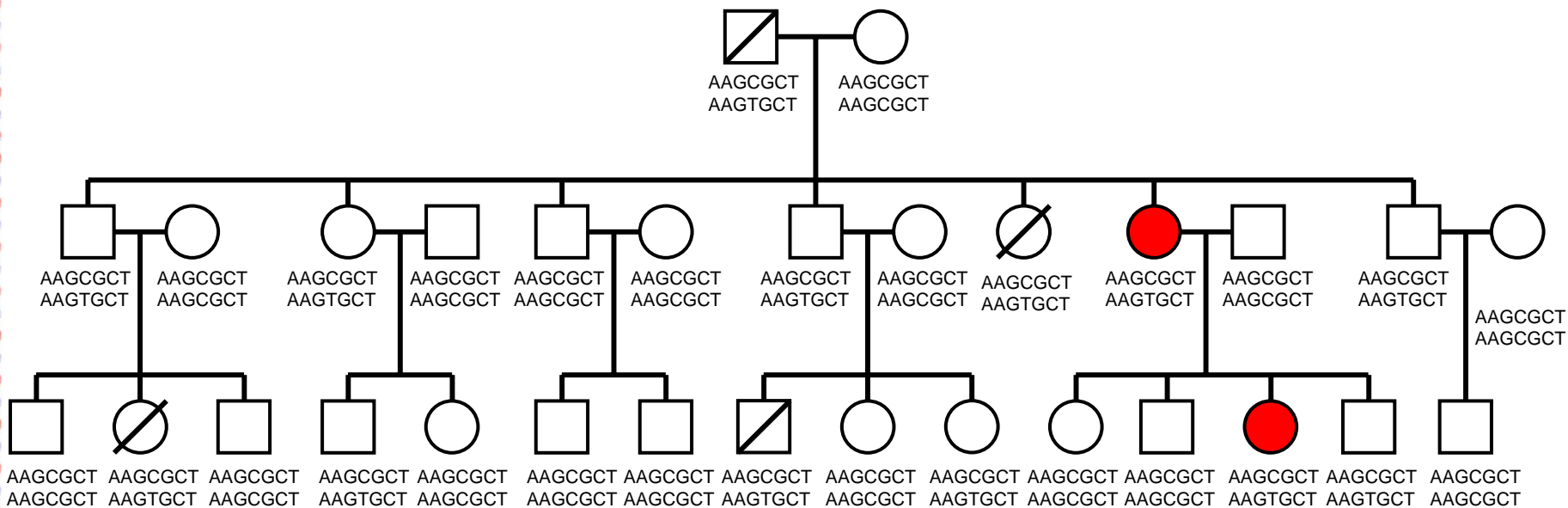


Can you work out who is at risk of genetic heart disease and who isn't?



- \square Male
- \circ Female
- \bullet Showing clinical symptoms
- $\cancel{\circ}$ Deceased
- \square — \circ Married
- \square Child

Can you use the DNA sequences to work out which other family members are at risk of genetic heart disease? We've shaded in 2 family members to give you a head start!



Victor Chang Cardiac Research Institute

www.victorchang.com.au

