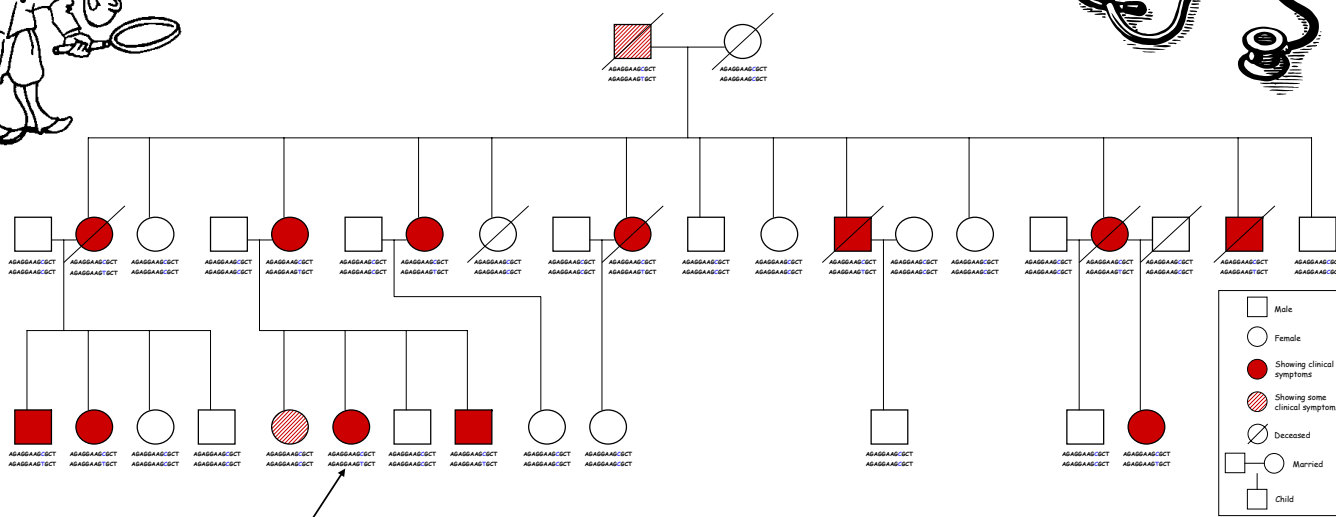


# Using DNA and family trees to get to the heart of the problem

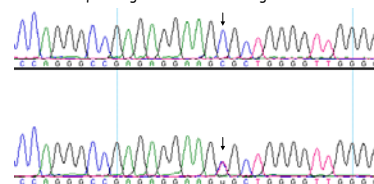


We do detective work to correlate the patients exhibiting clinical symptoms with abnormal changes in their DNA sequence



We have two copies of each gene - one from Mum and one from Dad. Sometimes one of the copies has a mutation that can cause disease. We can read the DNA sequence to find this mutation.

Sequencing Results - C/C changes to T/C



Finding the disease-causing mutation allows us to treat the cause of disease rather than just the symptoms.



Finding a disease-causing mutation in a gene gives us a better understanding of the disease process itself.

Finding the disease-causing mutation allows us to identify other family members who will eventually develop the disease and treat them prior to the onset of symptoms. This may allow us to prevent the development of the disease in some patients.